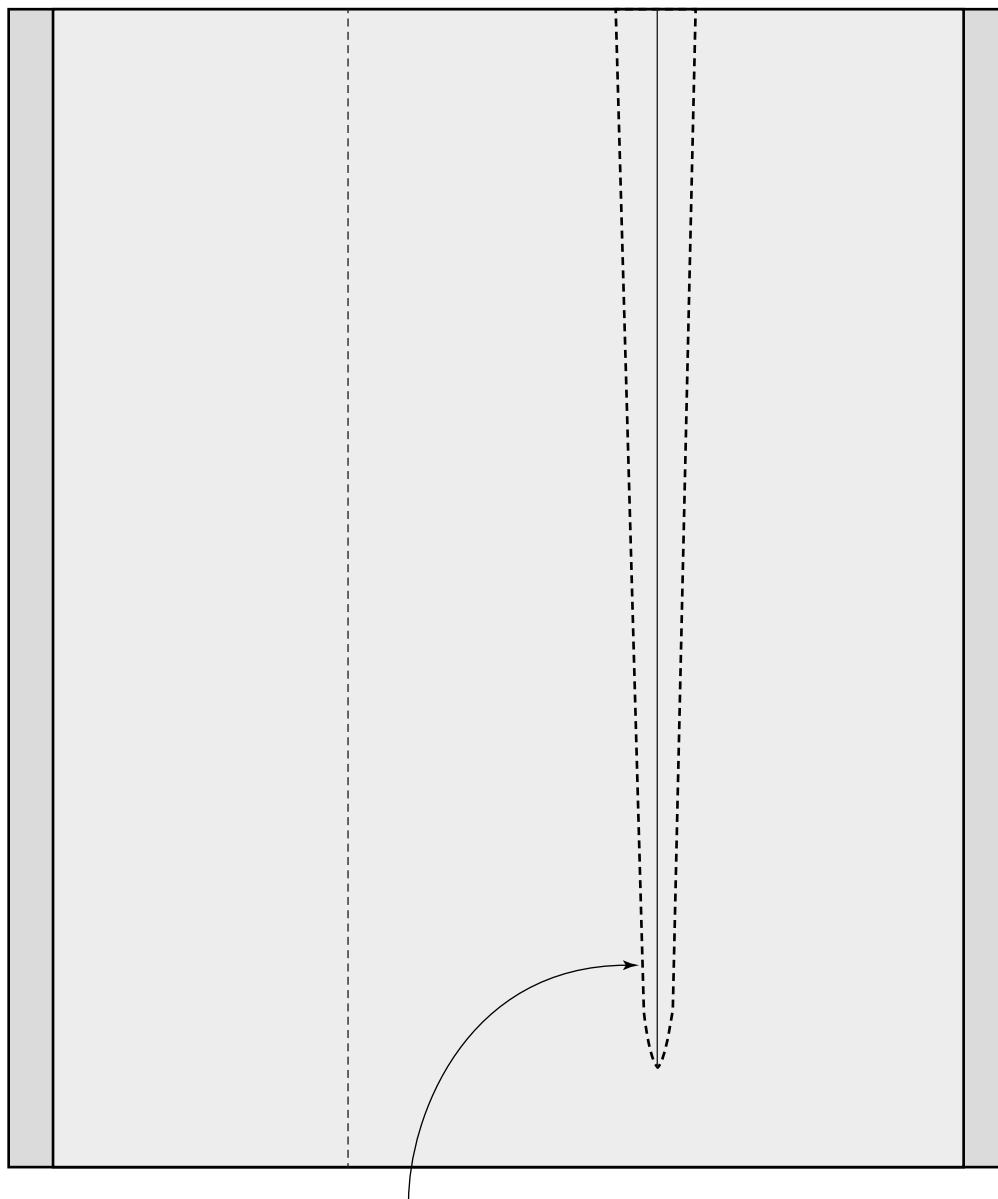
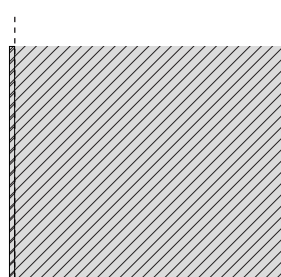


Type 4, Variante

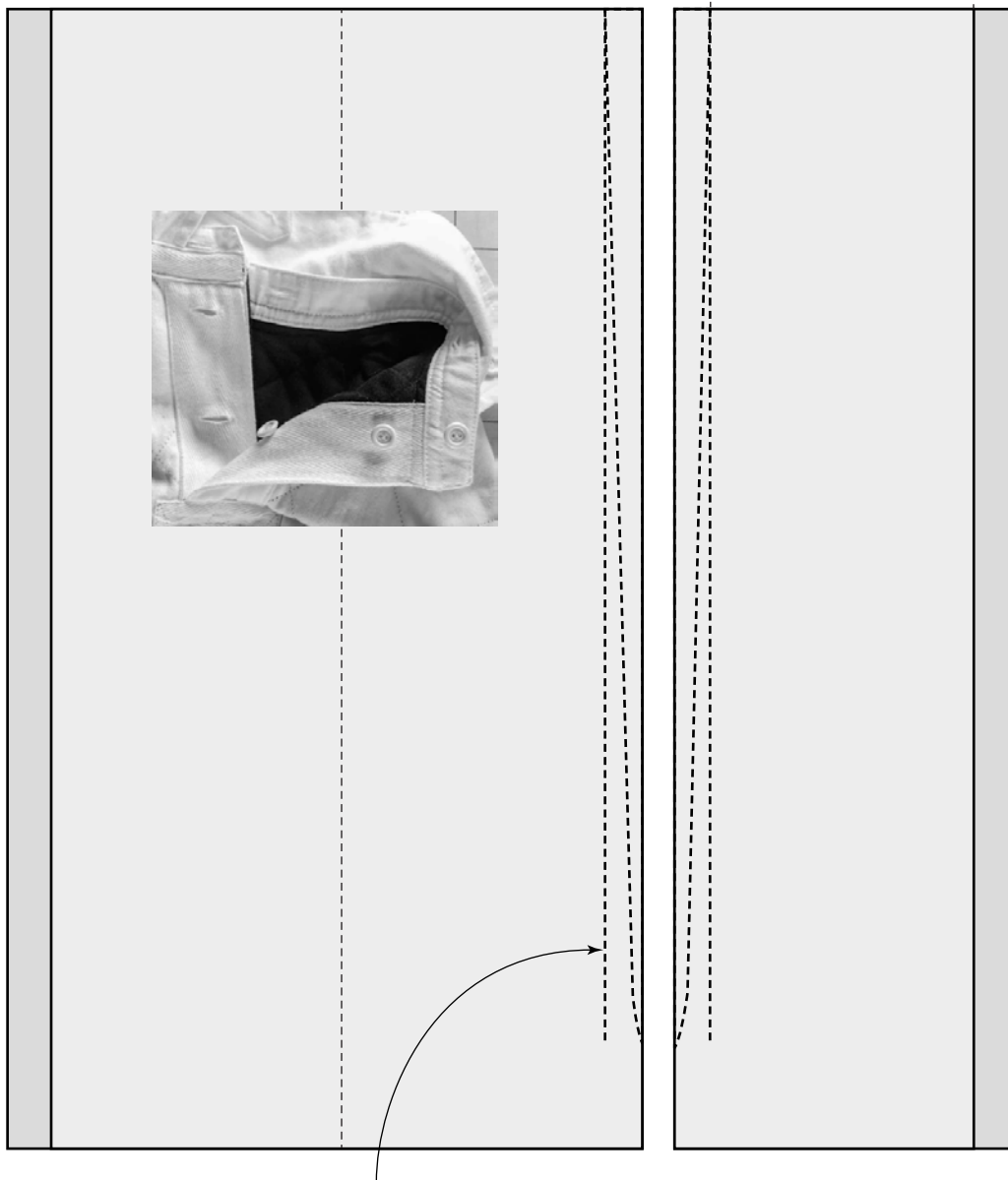


Les lignes de piqûre de la patte peuvent se terminer en biais, car les points traversent le tissu du vêtement et de la patte.

Si vous posez une ganse,  
alignez les pattes sur le bord  
intérieur des lisières de la  
ganse.

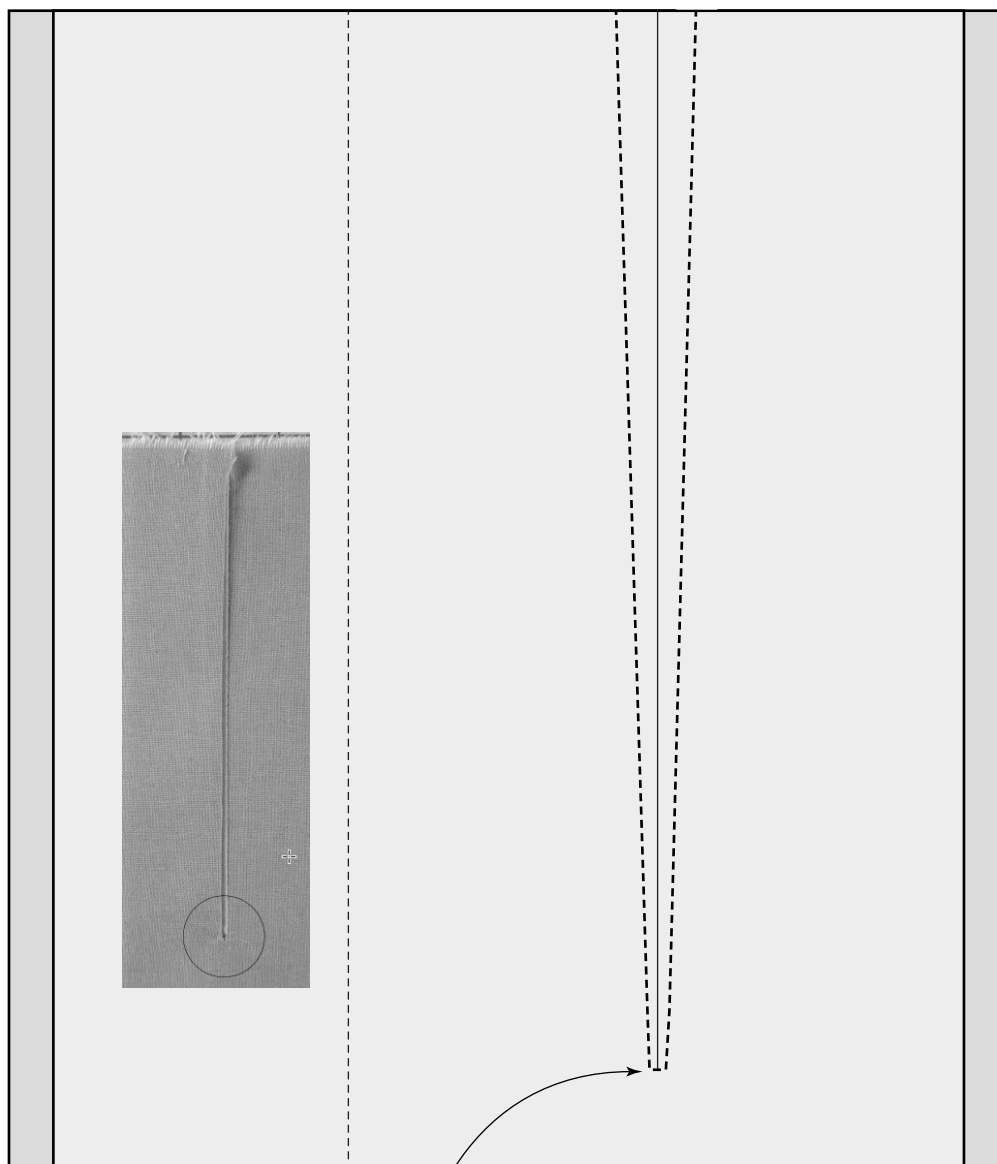


Type 4, Variante 2



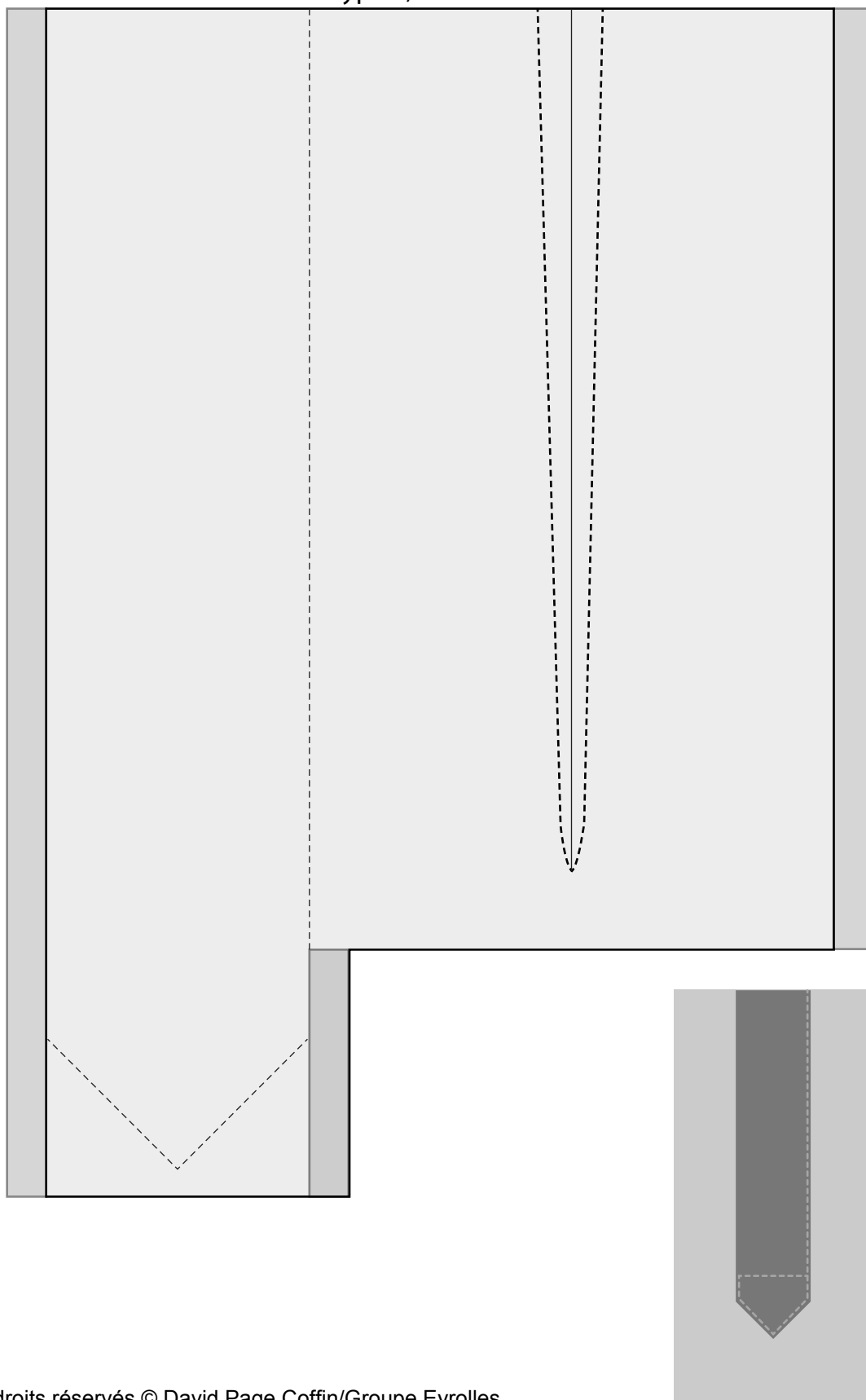
Les lignes de piqûre de la patte peuvent se terminer  
droites ou en biais, car le tissu du vêtement est  
cousu séparément.

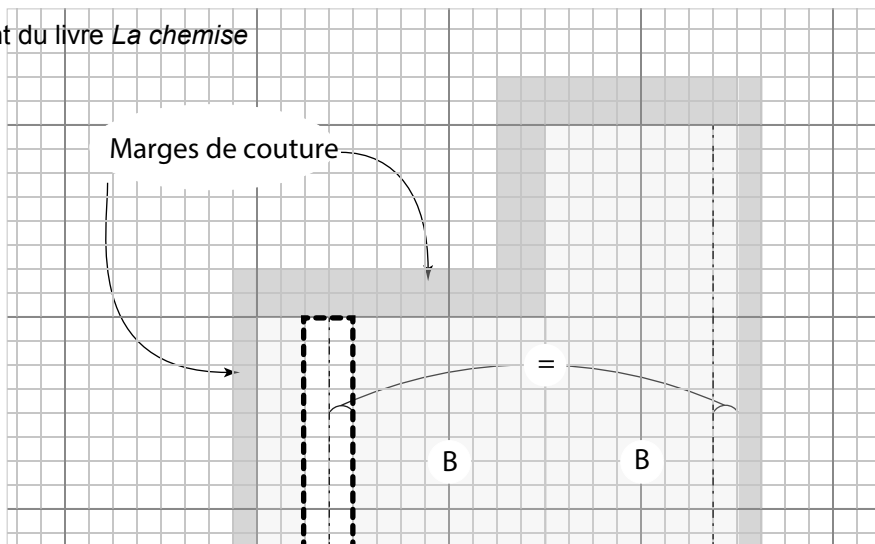
### Type 4, Variante 2A



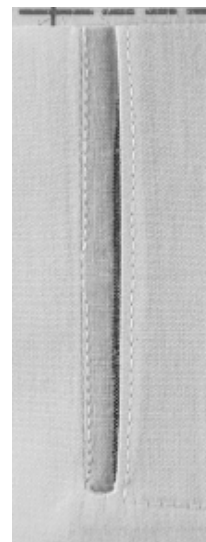
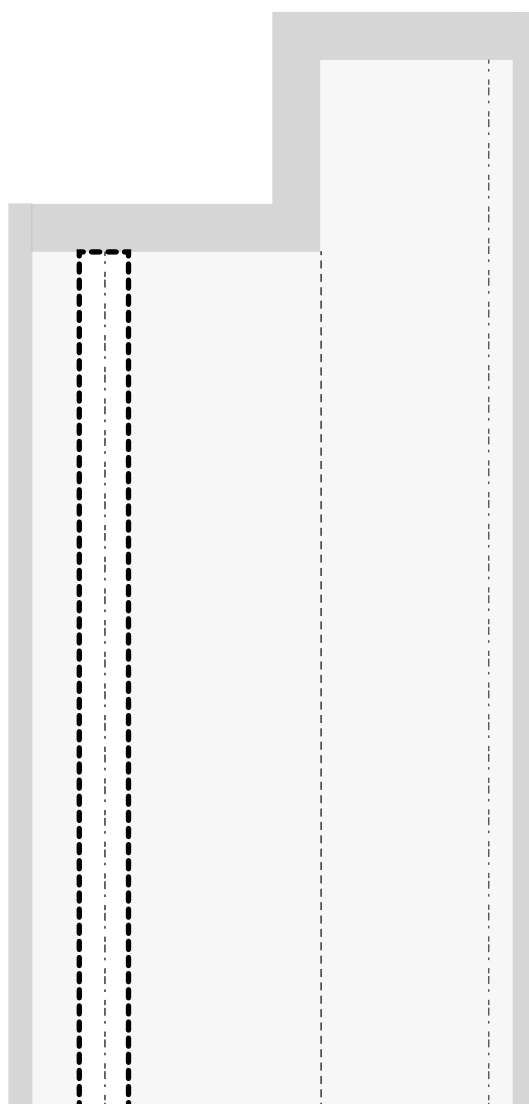
Pivotez DEUX FOIS pour obtenir une piqûre droite au bout de la fente.

## Type 4, Variante 3

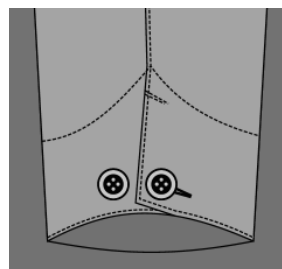
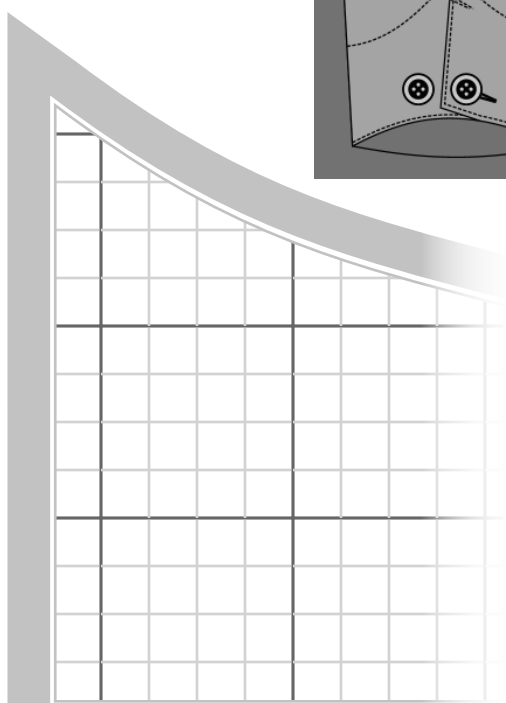
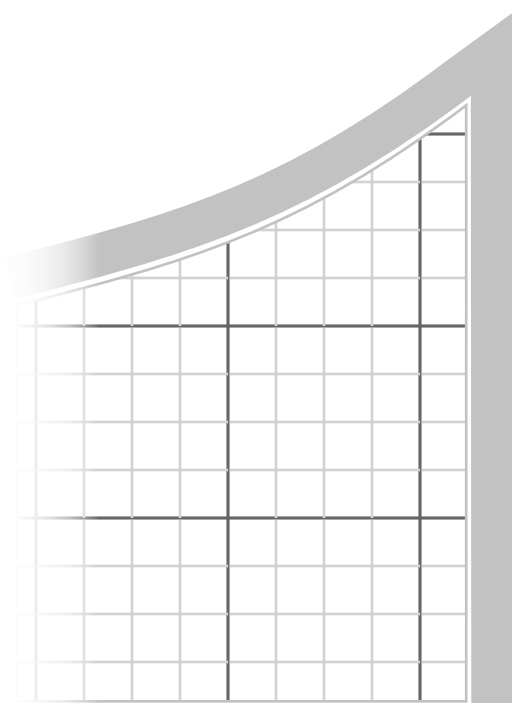
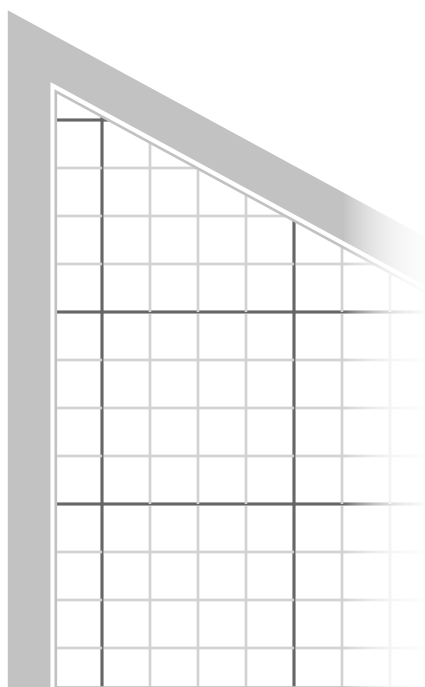
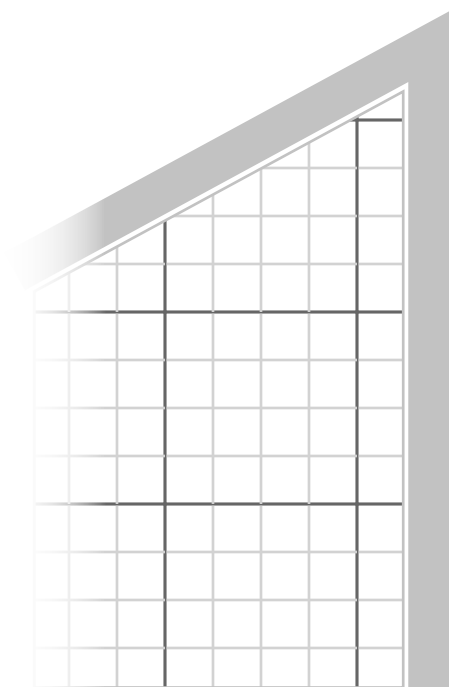




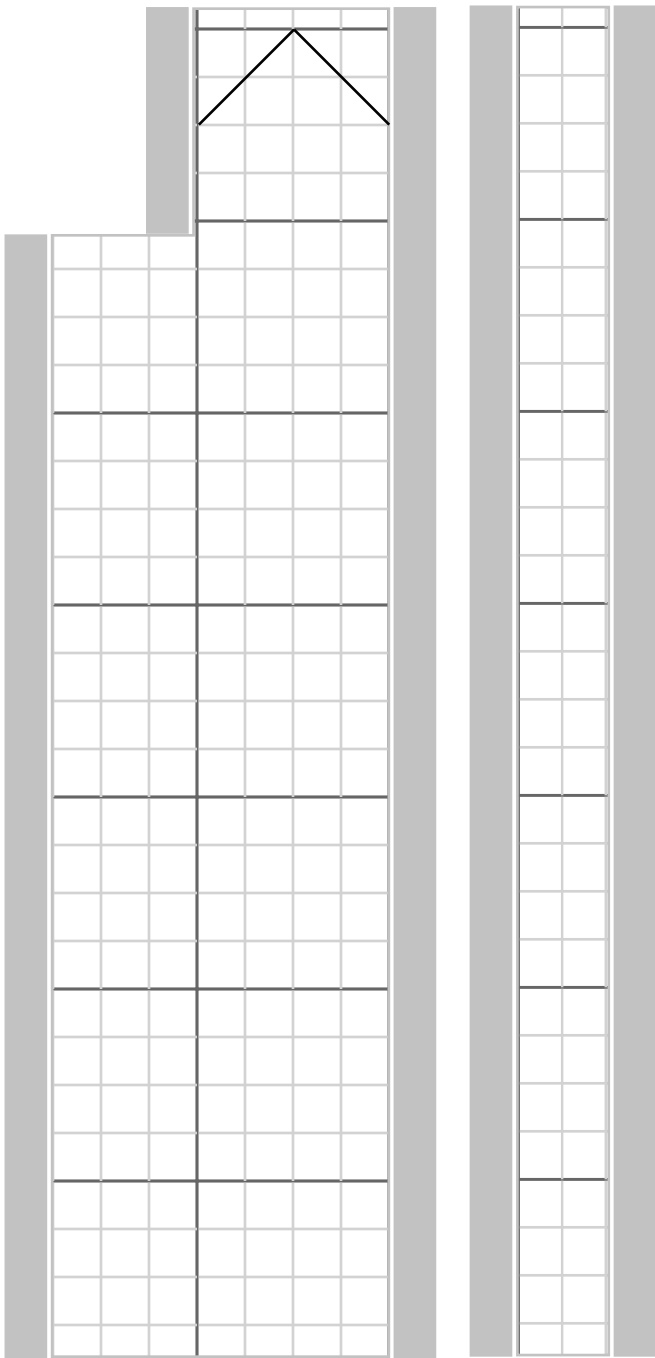
### Type 4, Variante 3A



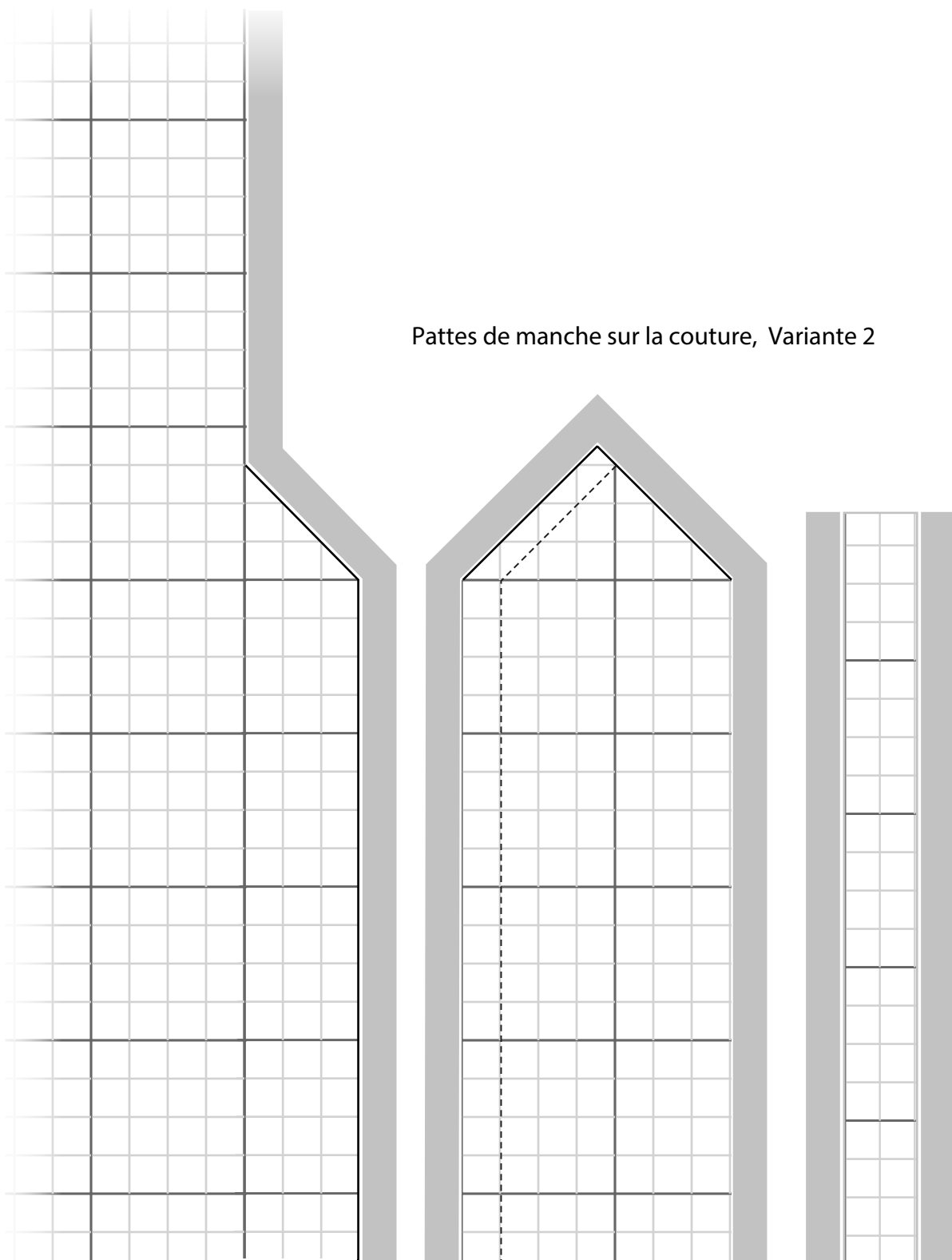
## Pattes de manche sur la couture



Pattes de manche sur la couture, Variante 1

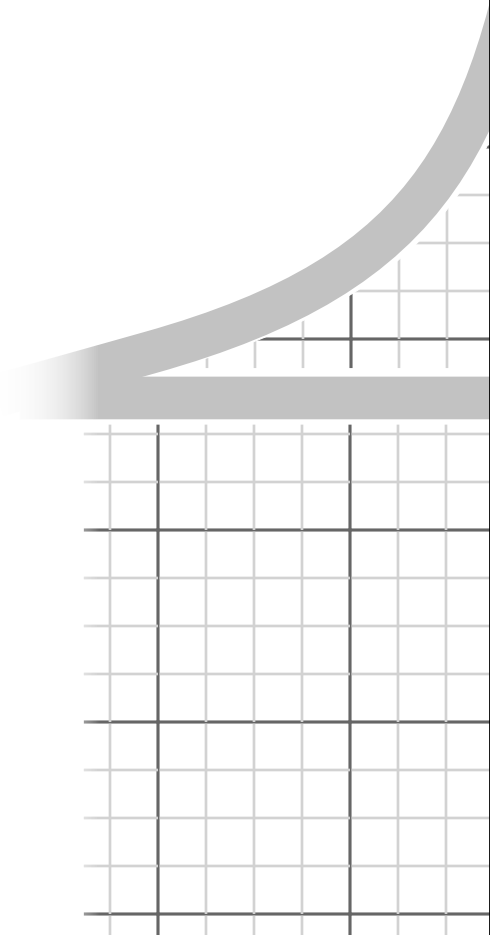
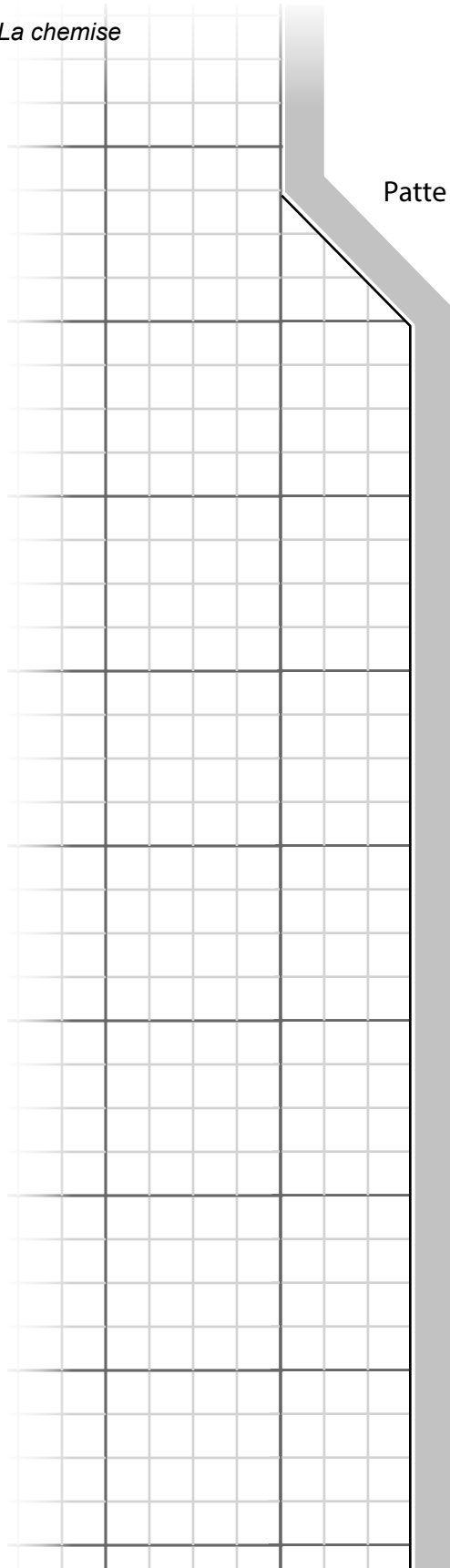


## Pattes de manche sur la couture, Variante 2





Patte de manche sur la couture, Variante 3



## Pattes de manche sur la couture, Variante 3

